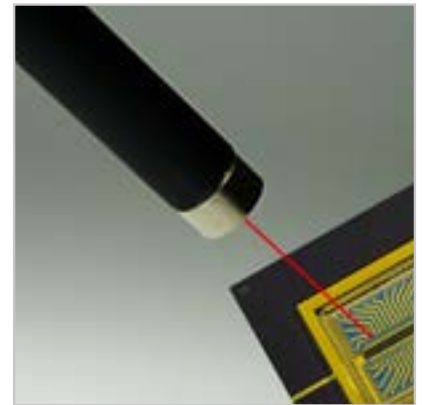


## Laser Modules for Microscopic Applications

LASER COMPONENTS has developed a special type of laser diode module that targets applications where microscopes are magnifying the laser spot. Thanks to high-quality optics and a manual alignment during the assembly stage, our modules achieve a beam spot diameter of 0.02 mm ( $1/e^2$ ) at a working distance of 100 mm. Additional features include the typical FLEXPOINT® characteristics such as a potential-free metal housing and reverse voltage protection.



### Specifications

Module type	FP-65/0,5AF-SD10-WD100
Spectral range	650 +/- 15 nm
Output power	0.5 mW
Laser class	2
Output power stability	< 3%
Beam profile	round
Optics	aspherical glass lens
Focal point diameter	20 µm
Working distance	100 mm
Beam angle error	<= 1°
Operating voltage	4.5 – 6 VDC
Current consumption	<= 50 mA
Working temperature	0 – 40 °C
Material	aluminium (black anodised)
Dimensions	see drawing

