



## D SCOPE MT

*High resolution microscope for Multi-Fiber connectors*

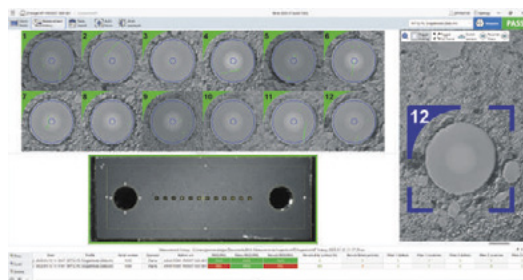
The D SCOPE MT microscope for MTP/MPO connectors is **highly repeatable and extremely fast**.

In the same measurement cycle, D Scope MT checks every optical fiber surface condition, and **allows the operator to control the cleanliness of the connector endface and guideholes**.

The fully automatic D SCOPE MT **is the ideal instrument for checking the conformity of connectors to Industry Standards**.

With BLINK, the Data-Pixel software platform, D Scope MT uses Deep Learning technology. **This AI has the advantage of improving the detection of defects, but above all, of being scalable**. If you want to deal with specific defect or atypical fiber cases, **Blink's Deep Learning can be taught to recognize defects from your samples**.

With very high measurement accuracy, D SCOPE MT has been designed for use in **high volume manufacturing environments or the most demanding laboratories**.



**DEEP LEARNING  
INSIDE**

### KEY FEATURES :

- Testing of PC/APC connectors and ferrules from 1 to 64 fibers
- Ultra-fast measurement time
- Automatic Pass/Fail defect analysis
- Automatic focus adjustment
- High resolution optics with defect size detection of 0.3µm
- Compliance with Industry Standards as IEC 61300-3-35
- Real time full connector endface view
- Intuitive Blink software with database connectivity
- Compatible with desktop PC, laptop, tablet PC

### MEASUREMENT TIMES :

CONNECTOR TYPE	FIBER SCREENING ONLY	WITH END FACE VIEW
MT 12	3 sec.	5 sec.
MT 24	5 sec.	7 sec.

### SPECIFICATIONS :

Magnification (fiber screening) :	x480*
Defect size detection (µm) :	0.3
Outputs :	USB 3.0 + 2.0
Power source :	12V
Dimensions H x W x L (mm) :	105 x 230 x 285
Weight (kg) :	7

\*On 24" screen, 96 dpi

## D SCOPE MT | INSPECTION

### TYPICAL REPORT (FOR MT 12):

**Inspection MT report** Generated by Blink Data-Pixel

Date	2023-01-12 11:05	Serial number	1550	<b>FAIL</b>
Measurement device	D Scope MT	Operator	Flame	
Device s/n	4104170281-P03537-020-001	Station s/n	4104170281-P03537-020-001	
Profile	MT12-PC (singleMode 28dB Copy int)			
Fiber diameter	125µm			

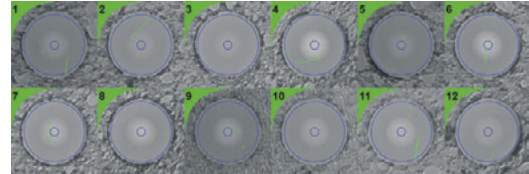
  

Ferrule control	Allowed	Measured	Pass/Fail
Dirty surface (%)	5%	3.179%	PASS
Number of failed particles	0	28	FAIL

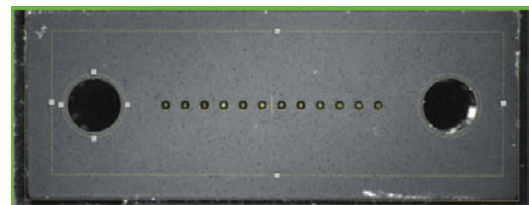
  

Zone A: Core			Zone B: Cladding		
Diameter: 11 µm Scratches Allowed: Up to 2 < 5 µm None > 5 µm Defects Allowed: None			Diameter: 110 µm Scratches Allowed: No limit < 5 µm Up to 2 from 5-5 µm None > 5 µm Defects Allowed: No limit < 5 µm Up to 5 from 5-10 µm None > 10 µm		
Fiber	Defects	Scratches	Fiber	Defects	Scratches
1	0	0 < 5 µm 0 > 5 µm	1	1 < 5 µm 0 from 5-10 µm 0 > 10 µm	PASS
2	0	0 < 5 µm 0 > 5 µm	2	0 < 5 µm 0 from 5-10 µm 0 > 10 µm	PASS
3	0	0 < 5 µm 0 > 5 µm	3	0 < 5 µm 0 from 5-10 µm 0 > 10 µm	PASS
4	0	0 < 5 µm 0 > 5 µm	4	0 < 5 µm 0 from 5-10 µm 0 > 10 µm	PASS
5	0	0 < 5 µm 0 > 5 µm	5	0 < 5 µm 0 from 5-10 µm 0 > 10 µm	PASS
6	0	0 < 5 µm 0 > 5 µm	6	0 < 5 µm 0 from 5-10 µm 0 > 10 µm	PASS
7	0	0 < 5 µm 0 > 5 µm	7	0 < 5 µm 0 from 5-10 µm 0 > 10 µm	PASS
8	0	0 < 5 µm 0 > 5 µm	8	0 < 5 µm 0 from 5-10 µm 0 > 10 µm	PASS
9	0	0 < 5 µm 0 > 5 µm	9	0 < 5 µm 0 from 5-10 µm 0 > 10 µm	PASS
10	0	0 < 5 µm 0 > 5 µm	10	0 < 5 µm 0 from 5-10 µm 0 > 10 µm	PASS
11	0	0 < 5 µm 0 > 5 µm	11	0 < 5 µm 0 from 5-10 µm 0 > 10 µm	PASS
12	0	0 < 5 µm 0 > 5 µm	12	0 < 5 µm 0 from 5-10 µm 0 > 10 µm	PASS

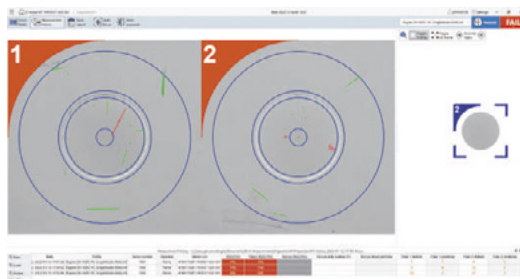
### AUTOMATIC PASS/FAIL RESULT ON FIBER DEFECTS :



### AUTOMATIC PASS/FAIL RESULT ON FULL MT FERRULE CLEANLINESS :



### INSPECTION OF A LC DUPLEX CONNECTOR:



Thanks to its wide field of view camera, the Dscope MT allows to scan both ferrules of Duplex connectors in one shot whether it is LC Duplex or Very Small Form Factor connectors (CS, SN, MDC,...).

It represents a substantial time saving as the inspection results for both ferrules are obtained simultaneously without having to manipulate the connector.

### ORDER OPTIONS :

D Scope MT unit with Blink Inspection SF & MT	70-DSMT-V1-A10-00
Flange MT Male/Female, PC/APC, 12/16/24/32 fibers	30-FL-002181
Flange MPO Male/Female, PC/APC, 12/16/24/32 fibers	30-FL-003277
Flange Single-Fiber 1.25 mm PC/APC	30-FL-002314
Flange Single-Fiber 2.50 mm PC/APC	30-FL-002315
Flange Optitap PC/APC 2.50mm	30-FL-003429
Flange Duplex Single-Fiber 1.25mm (LC, MDC, CS, SN,...)	Several references available